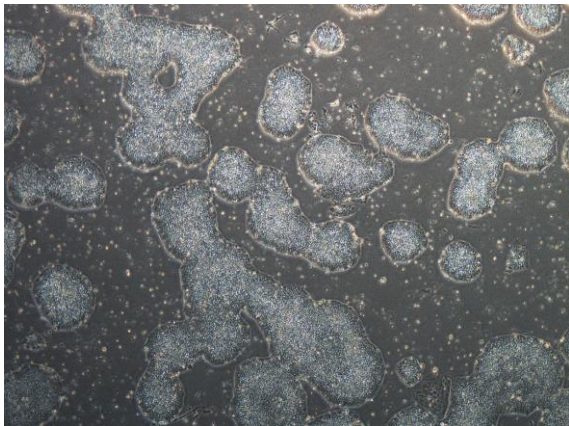
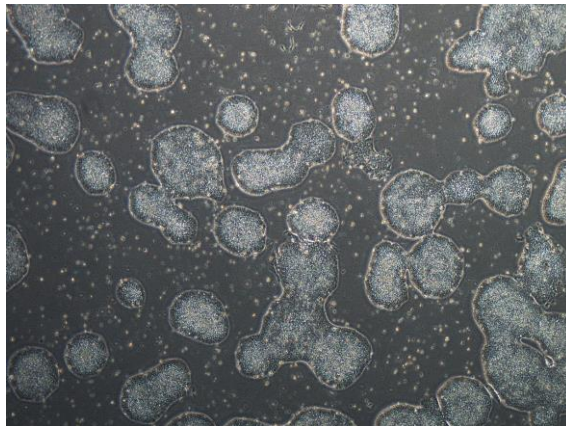


## 【 CiRA-j-1116 】 Morphology of iPSC colonies

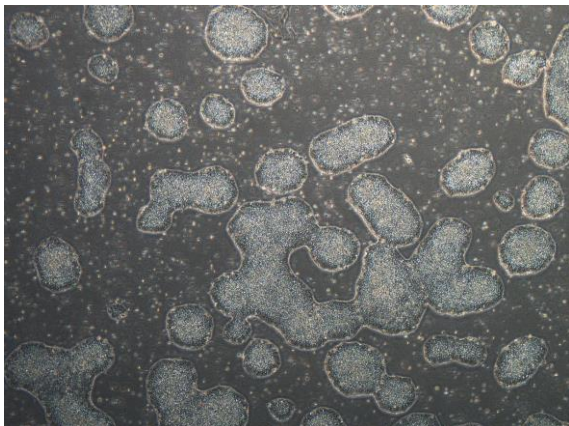
CiRA-j-1116-A: passage-3



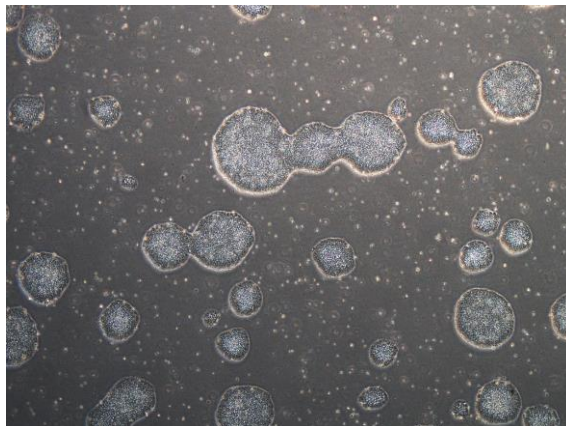
CiRA-j-1116-B: passage-3



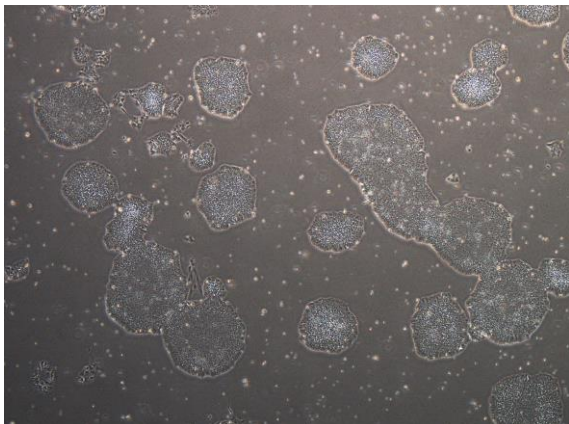
CiRA-j-1116-C: passage-3



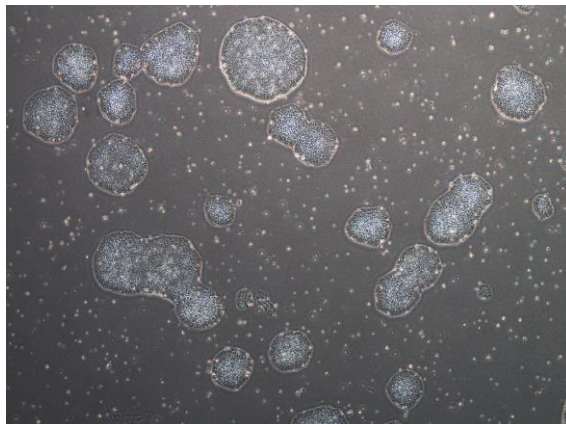
CiRA-j-1116-D: passage-3



CiRA-j-1116-E: passage-3



CiRA-j-1116-F: passage-3



( All images were captured at 4x magnification )